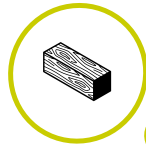


Hall 10 - BSMART! CONSTRUCTION

WOOD FORUM

wood in environmentally-friendly building efficiency structural wood performance: fire proofing seismic behavior energy containment technology innovation durability multi-storey buildings and wooden skyscrapers wood market developments



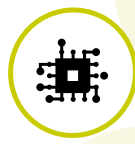
MATERIALS, PRODUCTS & TECHNOLOGIES

new materials
new technologies
plants
innovation
solutions
light materials
prefabrication
modularity
wood
steel
concrete
brick
composite materials



CONSTRUCTION 4.0

digital construction sites
prototyping
parametric architecture
robot
3D printers
augmented reality
industrialization
digitalization
process
(design, development, construction site)
off-site construction
modularity
construction forum
drones
light additive Architecture
design & computational modeling



BIM & CONSTRUCTION INDUSTRY DIGITALIZATION

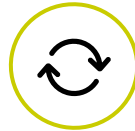
integrated design
BIM
BEM (Building Energy Modelling)
DIM (District Information Modelling)
structural modelling
maintenance
plants
digitalization
tenders
software
big data

PROFESSION

continuous training
job market
prospects
new tender codes
regulations
market & finance
exchange of real estate
banking and real estate funds
today's designing complexity
interdisciplinarity
job competence certifications



INNOVATION BETWEEN BIM AND CONSTRUCTION INDUSTRIALIZATION



RECYCLING BUILDING

zero carbon
materials and components life cycle
materials recycle
wood
brick
concrete
steel
rebuilding (demolition & reconstruction)
selective demolition
recyclable materials

SAFETY

territorial safety
quake & post-quake emergency management
earthquake-proof interventions
anti-seismic design
buildings' safety
worksite engineering and safety
fire safety
new fire-prevention regulations
regulations
diagnostics



TRAINING CREDITS

BIM

BIM LAB



CONSTRUCTION CHAIN INNOVATION



SOFTWARE & DIGITALIZATION



TECHNOLOGIES



SAFETY